

Introduction to net zero for Small Businesses

7th March 2025

Broadway
INITIATIVE



IEMA

Agenda and Speakers

- Introduction by chair, *Chloë Fiddy, IEMA*
- What net zero means for businesses, *Martin Baxter, IEMA*
- Support and resources from UK Business Climate Hub, *Chris Taylor, Broadway Initiative*
- Net Zero in practice, *Ian Agnew, Director, Dark Woods Coffee*

Net Zero Transition

Policy, Regulation and Compliance

- Martin Baxter
Deputy CEO
- m.baxter@iema.net

 [@mbxsustain.bsky.social](https://bsky.social/mbxsustain)



We're soon to become the Institute of Sustainability and Environmental Professionals (ISEP)

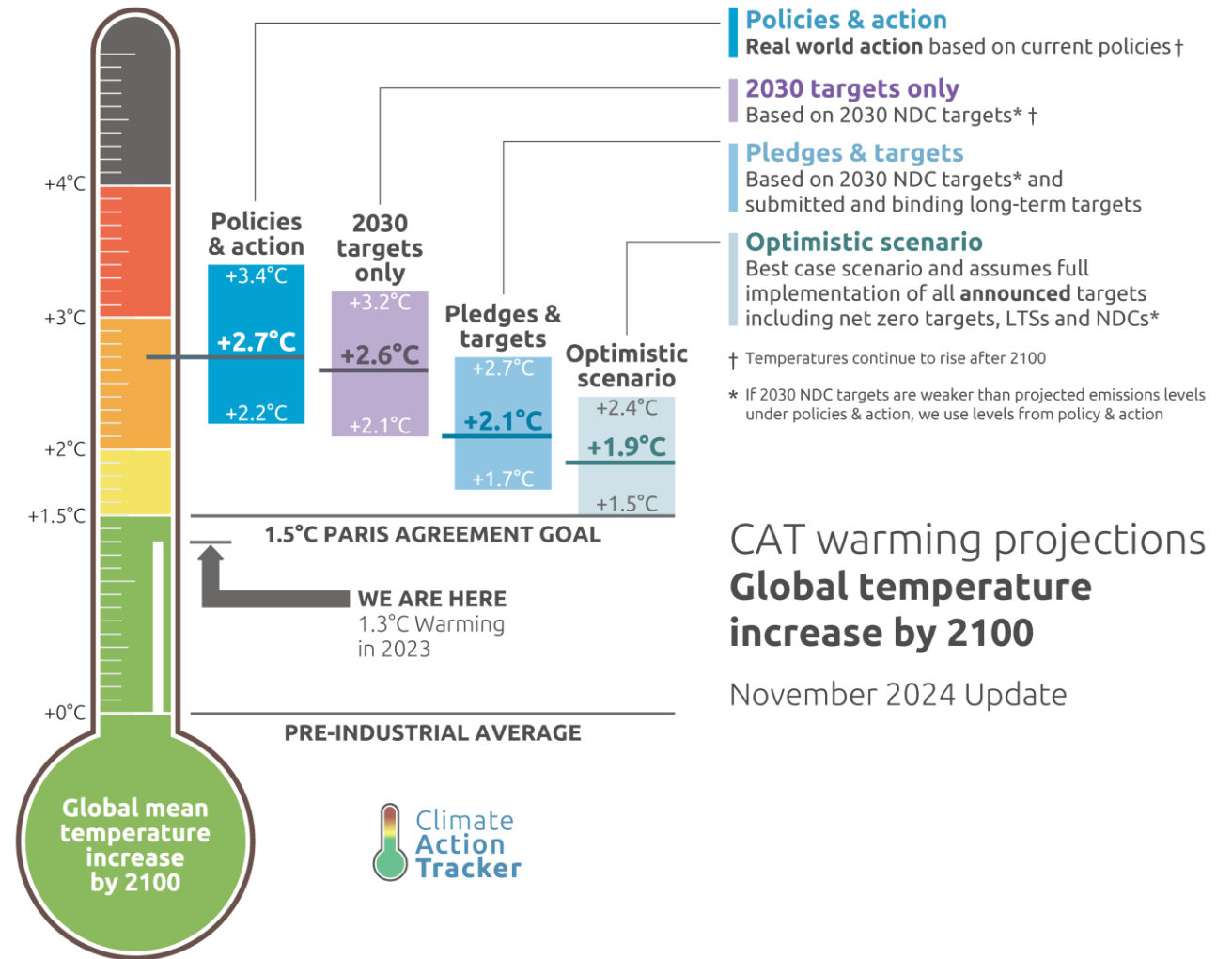
UNFCCC 2015 Paris Agreement

- Hold the increase in the global average temperature to well below 2°C and pursue efforts to limit temperature increase to 1.5°C above pre-industrial levels
- Increase the ability to adapt to the adverse impacts of climate change and foster climate resilience in a manner that does not threaten food production; and
- Make finance flows consistent with a pathway towards low greenhouse gas emissions and climate-resilient development.



Climate Change - trajectory

<https://climateactiontracker.org>



CAT warming projections
**Global temperature
increase by 2100**

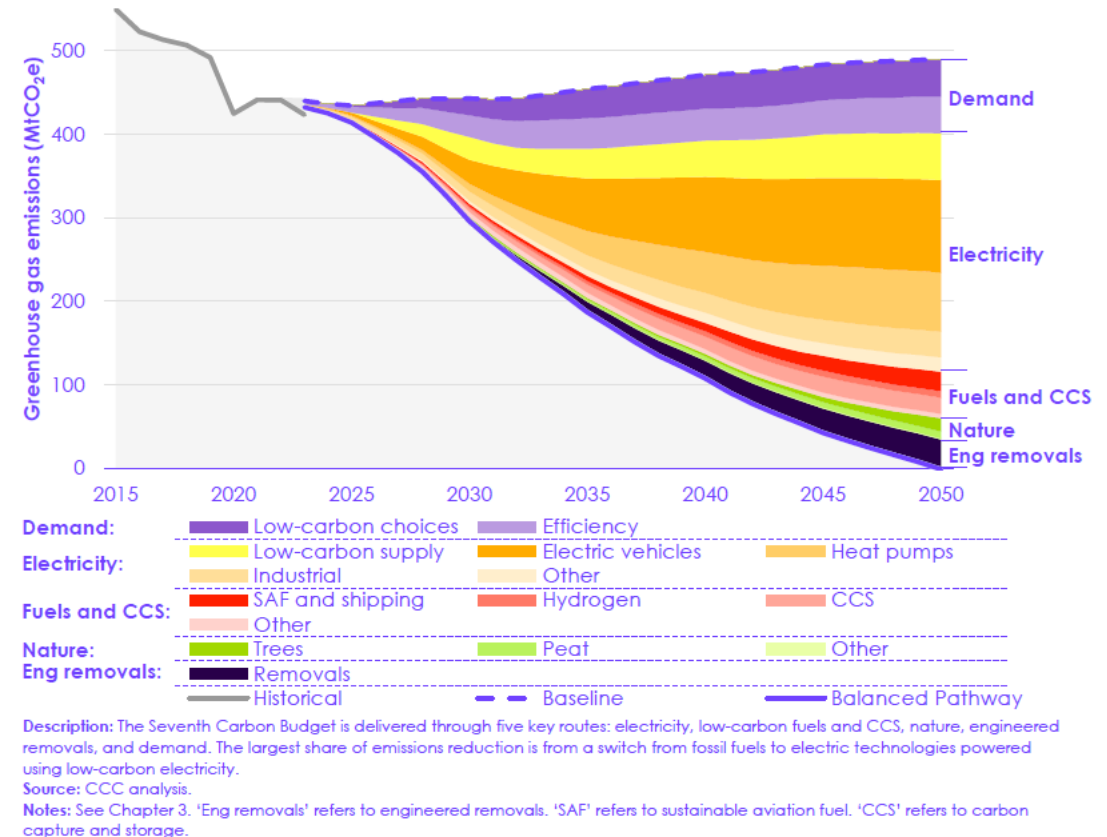
November 2024 Update

Climate Change Act and Carbon Budgets



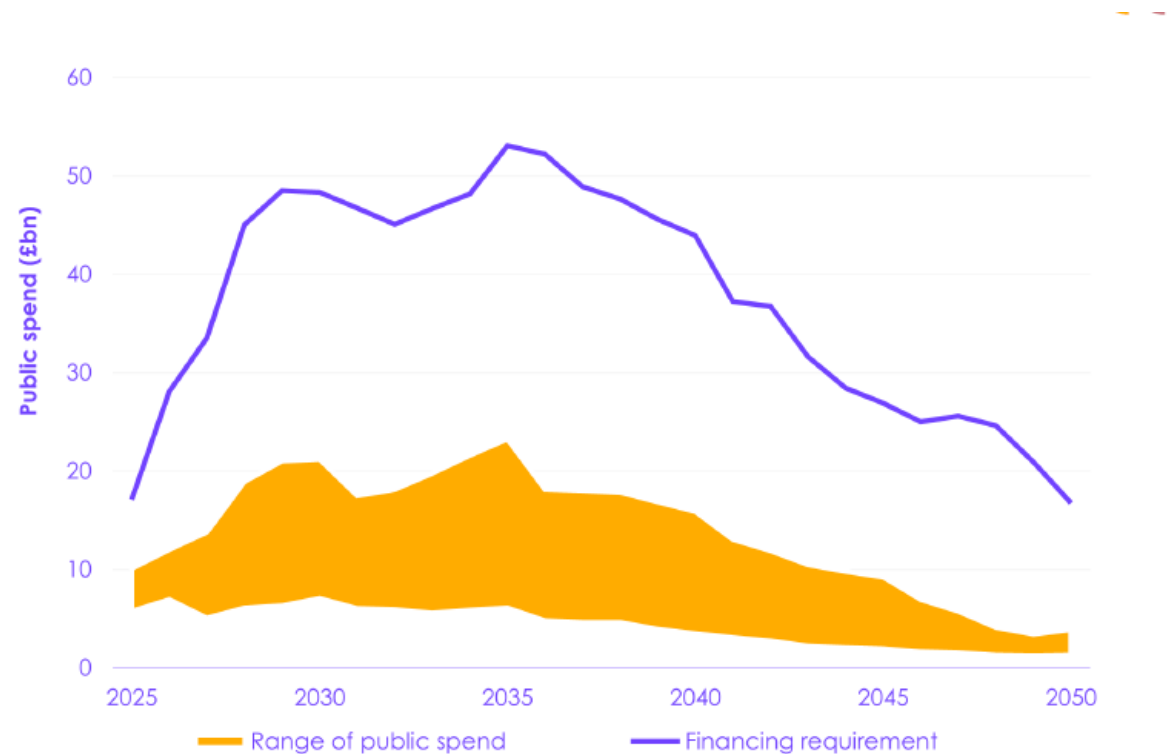
Sources of abatement towards 2050 Target

- Role of demand reduction (efficiency and choices)
- Increasing importance of electrification
- Heat pumps 3-4x more efficient than gas boilers
- EVs – cheaper to run but strategic decision needed to weigh capital costs
- Hydrogen



Source: Climate Change Committee (2025) The Seventh Carbon Budget: Advice for the UK Government.

Private sector finance and investment ranges between 40-90% of costs



Description: We anticipate public spend being higher early in the transition and to reduce in later years. Throughout the transition, estimated public spend is a relatively small proportion of the financing required.

Source: CCC analysis.

Notes: (1) Data represent a range based on illustrative policy options. Actual policy choices are for government to decide. (2) We used balanced Pathway additional capital expenditure (before double counting adjustments) and applied upper and lower estimates of the proportion of this that would be publicly funded. We based this assessment on economic incentives for private actors to adopt balanced Pathway measures, committed budgets, and distributional considerations. (3) The financing requirement line used here is different to the additional capital expenditure used for the whole-economy costs analysis, where the cost of generating additional energy is maintained in sector operating costs and removed from capital costs, to avoid double counting. As this analysis considers only capital expenditure, we use the pre-adjusted numbers. Numbers are still consistent with whole-economy costs.



Taking action on climate can:

- Reduce energy and resource costs and improve business resilience
- Make your products and services more attractive to consumers
- Enable you to comply with procurement requirements from business customers
- Offer opportunities for new products and services to enable the transition to a low carbon economy
- Attract, motivate and retain employees
- Help to secure funding and investment
- Ensure the world is a good place to live for future generations

Call to Action – Net Zero

- Standard business decision making - plan for a minimum 2C (...3C warming) and stress test 4C scenarios
- Set a net zero pathway consistent with the science and in line with UK government 7th Carbon Budget recommendation
- Develop a transition plan, supported with a workforce skills plan, to deliver the changes needed, with appropriate level of granularity
- Be prepared to report on your performance
- Engage with your customers – tell them the story of your journey of improvement



The logo consists of a horizontal bar divided into two sections. The left section is a medium blue color, and the right section is a darker blue color. The text 'IEMA' is written in white, bold, sans-serif capital letters on the darker blue background.

IEMA

Transforming the world
to sustainability

Martin Baxter

Deputy CEO

- m.baxter@iema.net

 [@mbxsustain.bsky.social](https://bsky.social/mbxsustain)

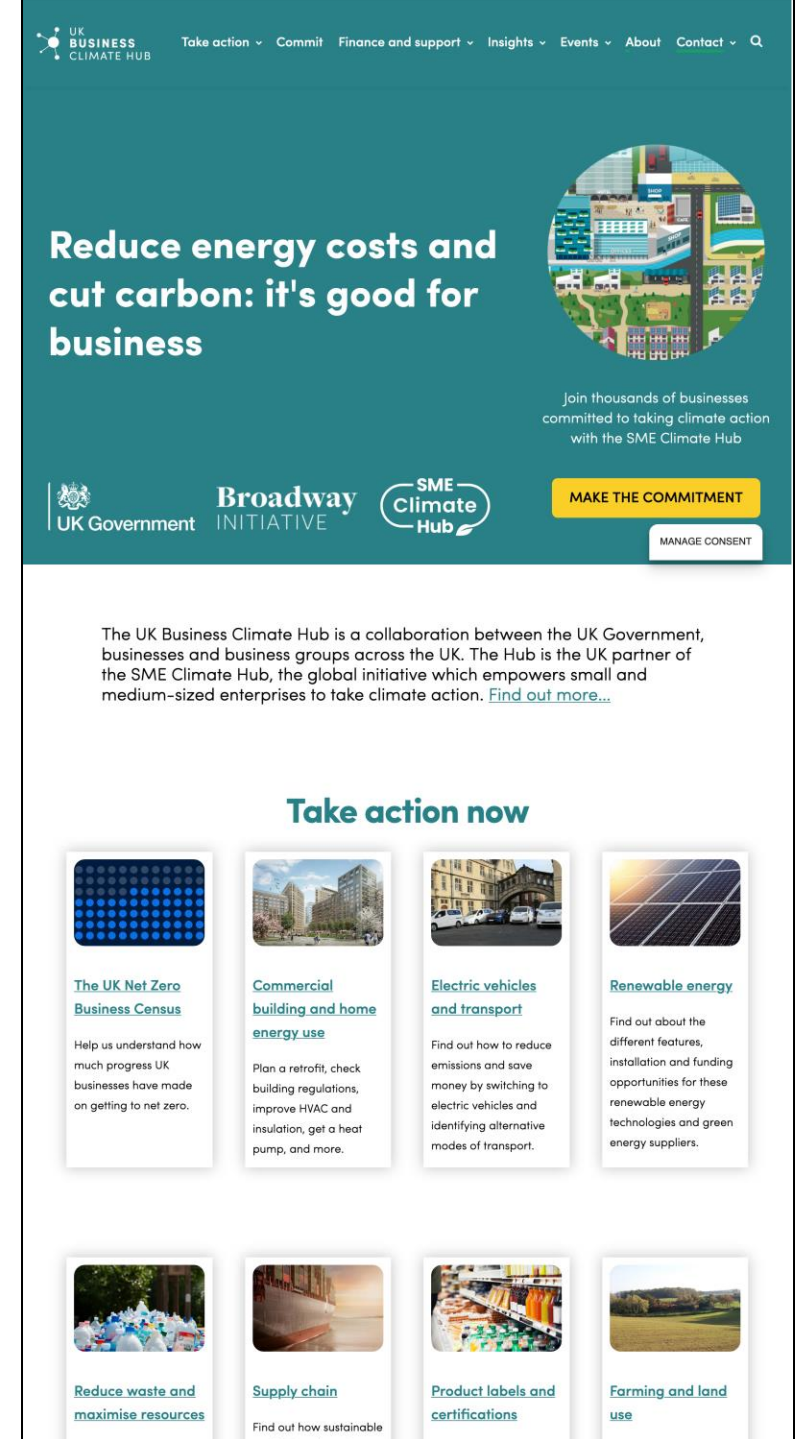
www.iema.net/all-jobs-greener

Support and resources from UK Business Climate Hub

Chris Taylor, Net Zero Programme Director, Broadway Initiative

UK Business Climate Hub

- The UK Business Climate Hub provides net zero advice for small and medium-sized enterprises (SMEs) in the UK.
- It is a shared endeavour, developed by the [Broadway Initiative](#) with the Department for Energy Security and Net Zero (DESNZ), the SME Climate Hub and the UK's main business organisations, energy networks, high street banks, other leading corporates, and professional bodies.
- The SME Climate Hub is the global initiative which empowers SMEs to make the SME Climate Commitment.
- www.businessclimatehub.uk



The screenshot shows the homepage of the UK Business Climate Hub. At the top, there is a navigation bar with links: 'Take action', 'Commit', 'Finance and support', 'Insights', 'Events', 'About', and 'Contact'. The main header features the text 'Reduce energy costs and cut carbon: it's good for business' next to a circular graphic of a city street. Below this, it says 'Join thousands of businesses committed to taking climate action with the SME Climate Hub'. Logos for the UK Government, Broadway Initiative, and SME Climate Hub are displayed, along with buttons for 'MAKE THE COMMITMENT' and 'MANAGE CONSENT'. A paragraph explains that the hub is a collaboration between the UK Government, businesses, and business groups across the UK, and is the UK partner of the SME Climate Hub. Below this is a section titled 'Take action now' with eight cards: 'The UK Net Zero Business Census', 'Commercial building and home energy use', 'Electric vehicles and transport', 'Renewable energy', 'Reduce waste and maximise resources', 'Supply chain', 'Product labels and certifications', and 'Farming and land use'. Each card has a representative image and a brief description of the resource.

UK BUSINESS CLIMATE HUB

Take action ▾ Commit ▾ Finance and support ▾ Insights ▾ Events ▾ About ▾ Contact ▾

Reduce energy costs and cut carbon: it's good for business

Join thousands of businesses committed to taking climate action with the SME Climate Hub


UK Government Broadway INITIATIVE SME Climate Hub

MAKE THE COMMITMENT

MANAGE CONSENT


The UK Business Climate Hub is a collaboration between the UK Government, businesses and business groups across the UK. The Hub is the UK partner of the SME Climate Hub, the global initiative which empowers small and medium-sized enterprises to take climate action. [Find out more...](#)

Take action now




The UK Net Zero Business Census

Help us understand how much progress UK businesses have made on getting to net zero.




Commercial building and home energy use

Plan a retrofit, check building regulations, improve HVAC and insulation, get a heat pump, and more.




Electric vehicles and transport

Find out how to reduce emissions and save money by switching to electric vehicles and identifying alternative modes of transport.




Renewable energy

Find out about the different features, installation and funding opportunities for these renewable energy technologies and green energy suppliers.




Reduce waste and maximise resources

Find out how sustainable




Supply chain

Find out how sustainable



Product labels and certifications

Find out how sustainable



Farming and land use

Find out how sustainable

Take action now



Production and cold storage

Find out about steps that can be taken to reduce carbon emissions from production and cold storage and move towards net-zero.



Commercial building and home energy use

Plan a retrofit, check building regulations, improve HVAC and insulation, get a heat pump, and more.



Electric vehicles and transport

Find out how to reduce emissions and save money by switching to electric vehicles and identifying alternative modes of transport.



Renewable energy

Find out about the different features, installation and funding opportunities for these renewable energy technologies and green energy suppliers.



Reduce waste and save water

Learn practical steps to cut down on waste and make the most of what you have. Discover how saving water also reduces energy consumption and contributes to a healthier planet



How to become a 'net zero' ready supplier

Find out what becoming a 'net zero' ready supplier means and how this can benefit your business.



Product labels and certifications

There are a number of product labels that certify low carbon emissions or other beneficial environmental actions.



Farming and land use

Land use changes are required for the UK to reach its goal of net zero emissions by 2050.

7 Steps to Sustainability

You don't have to do these steps in order. There are actions you could decide to take today.

1 Understand the basics

Find out everything you need to know about what net zero means and why it matters.

2 Involve your team

Get staff positively engaged and bring in external support to reinforce your plan.

3 Make the SME Climate Commitment

Make a commitment to climate action, access tools to reduce emissions, and disclose your progress.

4 Make a plan

Measure your current carbon emissions and start to plan to reduce them.

5 Take action

Take steps to reduce your emissions by theme or by sector.

6 Find finance and support

Find sources of funding and support on green loans, grants and other incentives.

7 Look beyond your own business

Get product certifications and labels, build a green supply chain, reduce business travel and more actions to reduce emissions.

Insights

Our [case studies](#) and [thought leadership articles](#) offer valuable insights from entrepreneurs, industry experts and senior business decision-makers who are leading the way on the sustainability agenda.



Greencore Homes:
paving the way for a
new standard for low
carbon construction



Crystal Doors:
setting clear
standards for net
zero manufacturing



**Electricity North
West: Do you know
your DNOs from your
DSOs?**



**Miranda Barker: The
business case for
sustainability**



**Martin McTague:
Green knowledge is
power**



**Martin Baxter: Skills
for a Net Zero Future**

Find more [insights](#).

Find finance and support across the UK

This list was last updated on 2 October 2024. [Use our 'add a source of finance or support' form](#) to have a programme added to this section.

National support and funding

[Across the UK](#)

[England](#)

[Northern Ireland](#)

[Scotland](#)

[Wales](#)

Regional support in England

[East of England](#)

[East Midlands](#)

[Greater London](#)

[North East England](#)

[North West England](#)

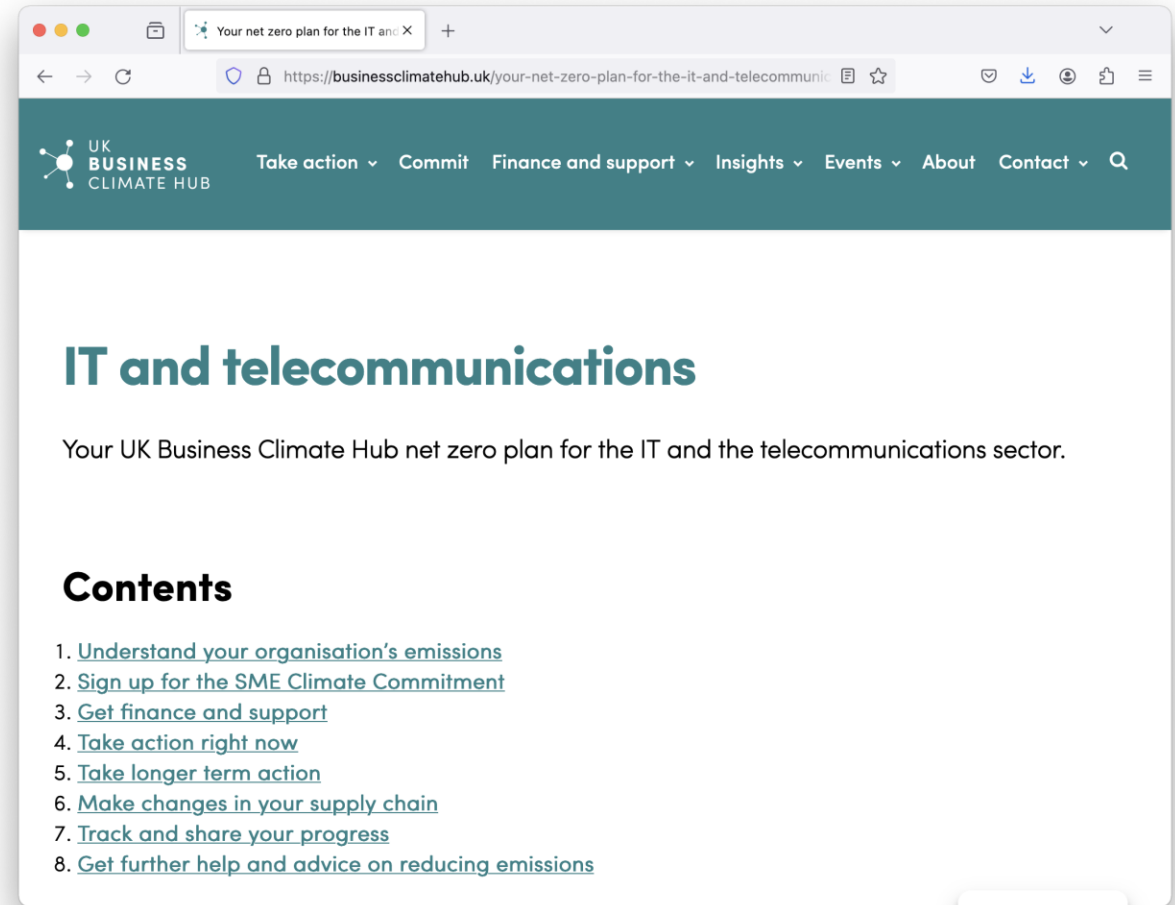
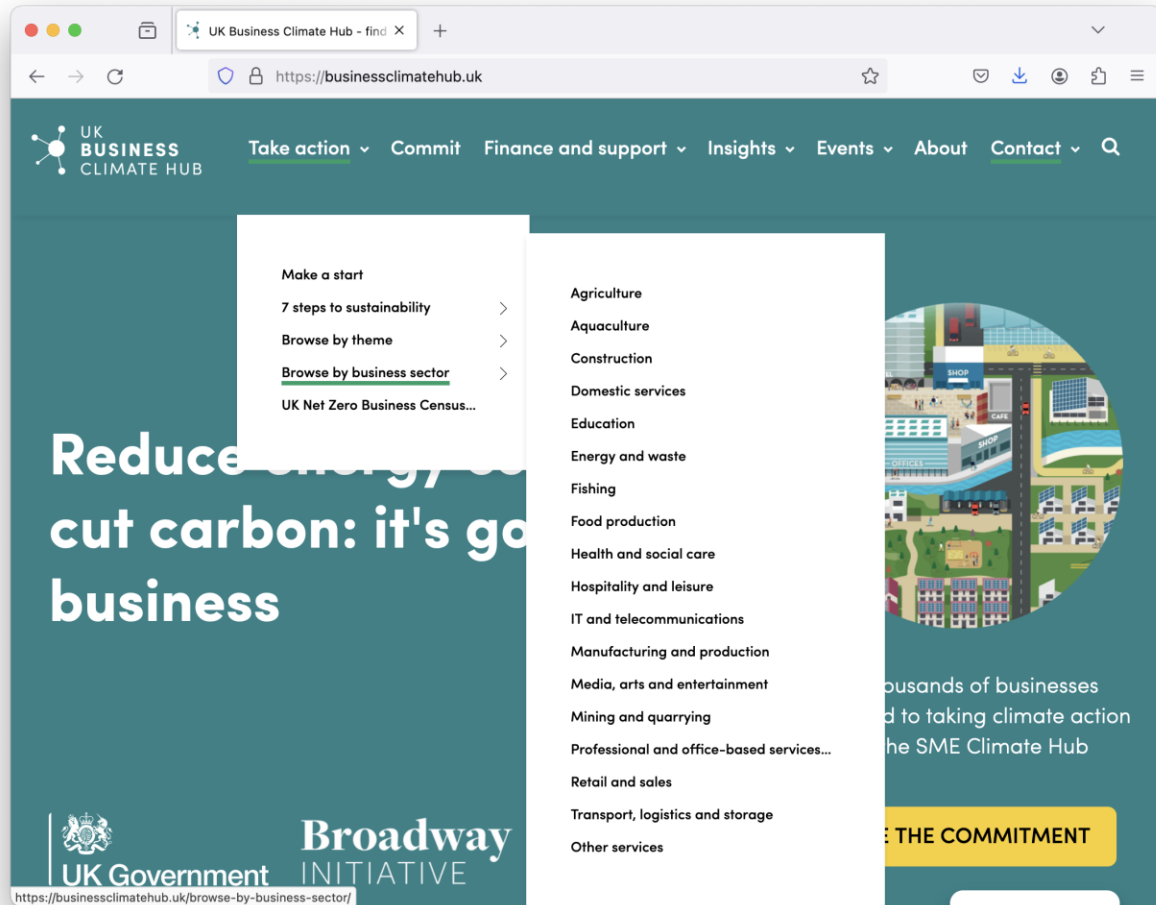
[South East England](#)

[South West England](#)

[West Midlands](#)

[Yorkshire and Humber](#)

Sector-focused guides

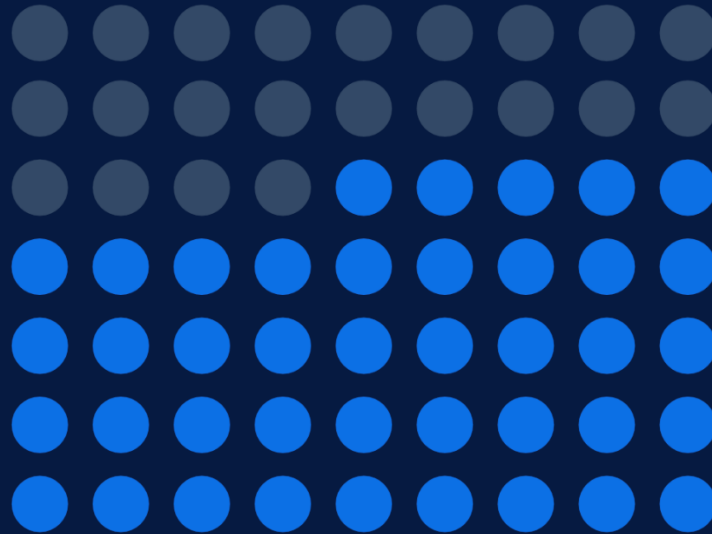


businessclimatehub.uk/census/

REPORT

UK Net Zero Business Census 2024

Results and Recommendations



IN PARTNERSHIP WITH



How to get involved

- Tell us what you're doing chris@broadwayinitiative.org.uk
- Visit www.businessclimatehub.uk to find out more
- Find local support at businessclimatehub.uk/finance-and-support-across-the-uk/
- Find events at businessclimatehub.uk/events/

Net Zero in practice

Ian Agnew, Director, Dark Woods Coffee

Dark Woods Coffee

Speciality Coffee Roaster

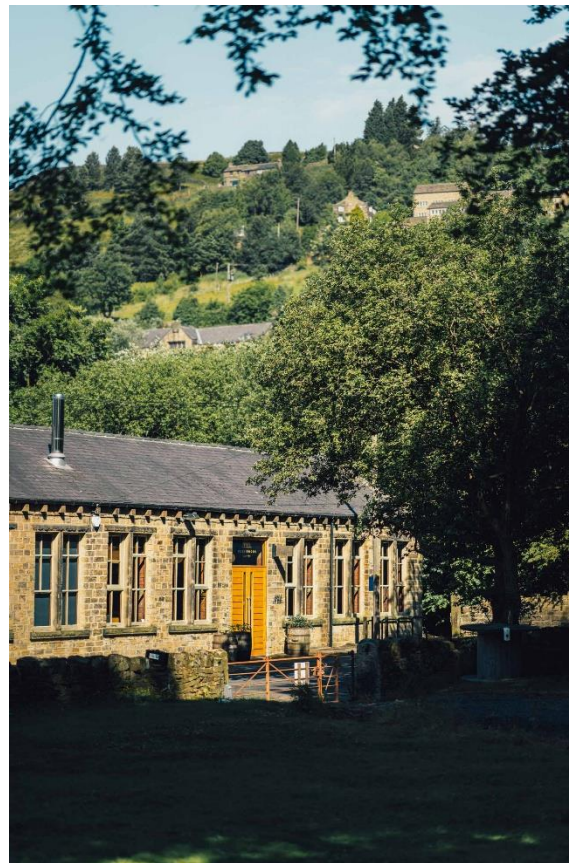
Based in West Yorkshire, UK

Established 2013

Certified B Corp since 2020

Employing 25 people

Sourcing the World's finest coffees, through equitable, long-term relationships with small producers. Challenging the coffee industry to do things better.

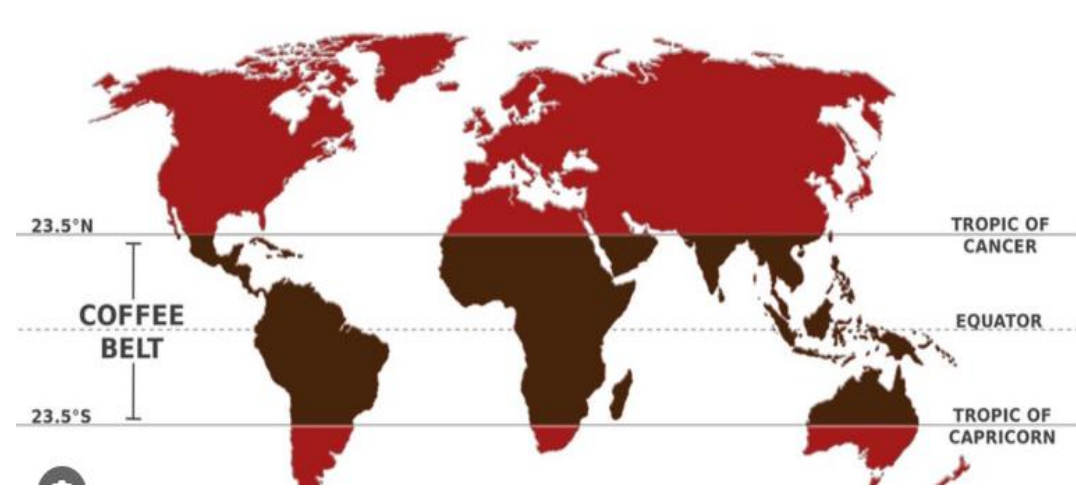


Background and Challenge

The coffee industry has a poor environmental and social track-record. Coffee is typically:

- Grown in the coffee-belt, between the tropics
- Typified by low-prices to farmers
- Generally pulped, dried and milled at origin, then shipped to consumer countries to be roasted
- Roasted in large gas-fired drum roasters
- Packed in laminate, high-barrier material, which can be challenging to recycle
- Shipped again, as a finished product, from roasters to coffee shops and consumers

We set up Dark Woods with the aim of challenging these norms



Our Approach

We have measured our carbon emissions since 2020.

We have parallel programmes to minimise and mitigate residual emissions

Installed low carbon heating –Air Source Heat Pump captures waste heat from roasting to heat workspaces

Installed solar panels on roof

Use electric vehicles

Switched to plastic-free, compostable packaging

Embraced circular-economy with reusable, returnable, recyclable containers



Carbon Programmes

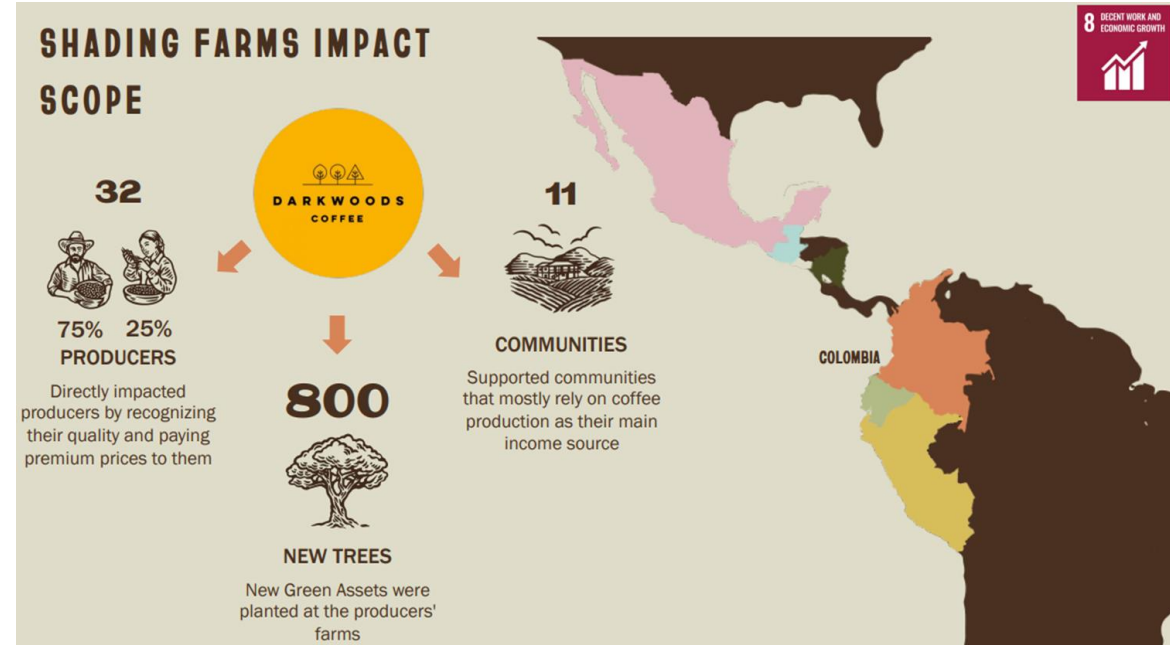
We work with our Colombian export partner (and fellow B Corp) Caravela, to measure and record annual carbon emissions

Our challenge is around where we draw the line on what we count and what is counted by suppliers and customers

We invest in multi-year regenerative farming programmes with coffee farmers within our supply-chain in Colombia

Farmers choose useful trees to plant within their coffee fields. Typically grown to provide fruit or bark, shade and improve root soil structure

Every tree is recorded – farmer, longitude/latitude, species, for carbon monitoring purposes



Broadway
INITIATIVE

Q & A



IEMA