

Managing waste: risks to collection and disposal services

IEMA Webinar

16th April 2020

Jacob Hayler

Executive Director

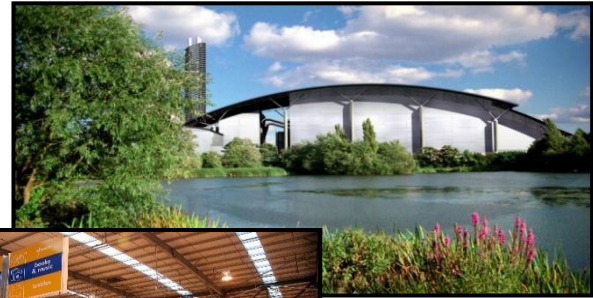
Environmental Services Association



environmental
services
association

ESA...

- is the trade association for the resource & waste management industry
- members represent the majority of the sector
- is funded by member subscriptions
- works to raise standards



environmental
services
association

Context – the current situation

- **Household services**
 - Collections holding up well
 - HWRCs and garden waste stopped
- **Commercial**
 - Under huge pressure
 - But essential service



environmental
services
association

Worst case planning

- Prioritisation to maintain core services
- Landfill backstop
- Capacity?



Waste industry response

- Waste as an essential service
- Workforce health & safety
- Permit & planning flexibility
- Relief from penalties



Waste as an essential service

- Key workers
- Specialist roles
- PPE supplies
- Chemicals & other critical supplies



environmental
services
association

Workforce health & safety

- Collaboration with HSE and PHE
- Social distancing concerns
- Need for worker reassurance
- Important role for WISH guidance
- Other govt guidance
- Continuing areas of debate



environmental
services
association

Permitting & planning flexibility

- Flexibility to follow health guidance
- Flexibility to maintain operations
- Driver/vehicle flexibility
- Devolved Administrations done well



Relief from penalties

- Need for flexibility
- CO guidance
- C19 impacts vs non C19 impacts
- Subsistence fees



Conclusions

- Absences stabilised
- HH services currently maintained
- Downstream market challenges
- Commercial struggles
- Can we keep servicing other essential organisations?



IEMA C19 webinar, 16th April 2020

Jacob Hayler
Environmental Services Association

THANK YOU



environmental
services
association