



The building blocks for a sustainable business – *my experiences; a personal perspective*

Alan Tinline

Head of Environment

Understand what is material and why

Materiality – what matters to whom, GHG`s, Air Quality, nuisance, resilience

Frameworks and governance

Get the framework in place and ensure robust high level governance

Focus on the significant aspects

Yes, its straightforward environmental management systems –
planning – but it works

Be able to monitor progress

Reflection is a very useful exercise,

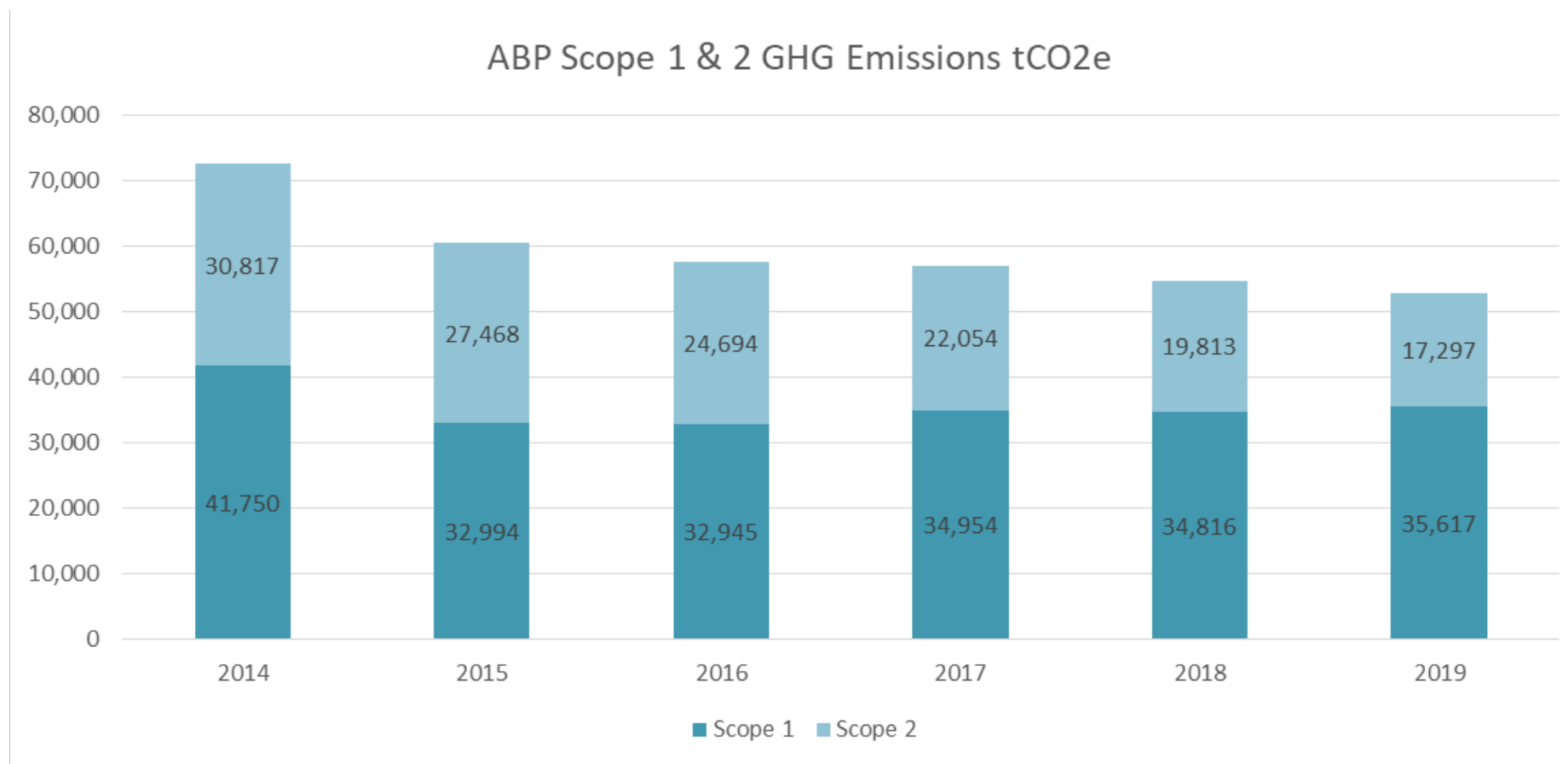
Short term – what do we need to do this month, did we do what we planned last month?

Medium term – annual reflection, management review etc.

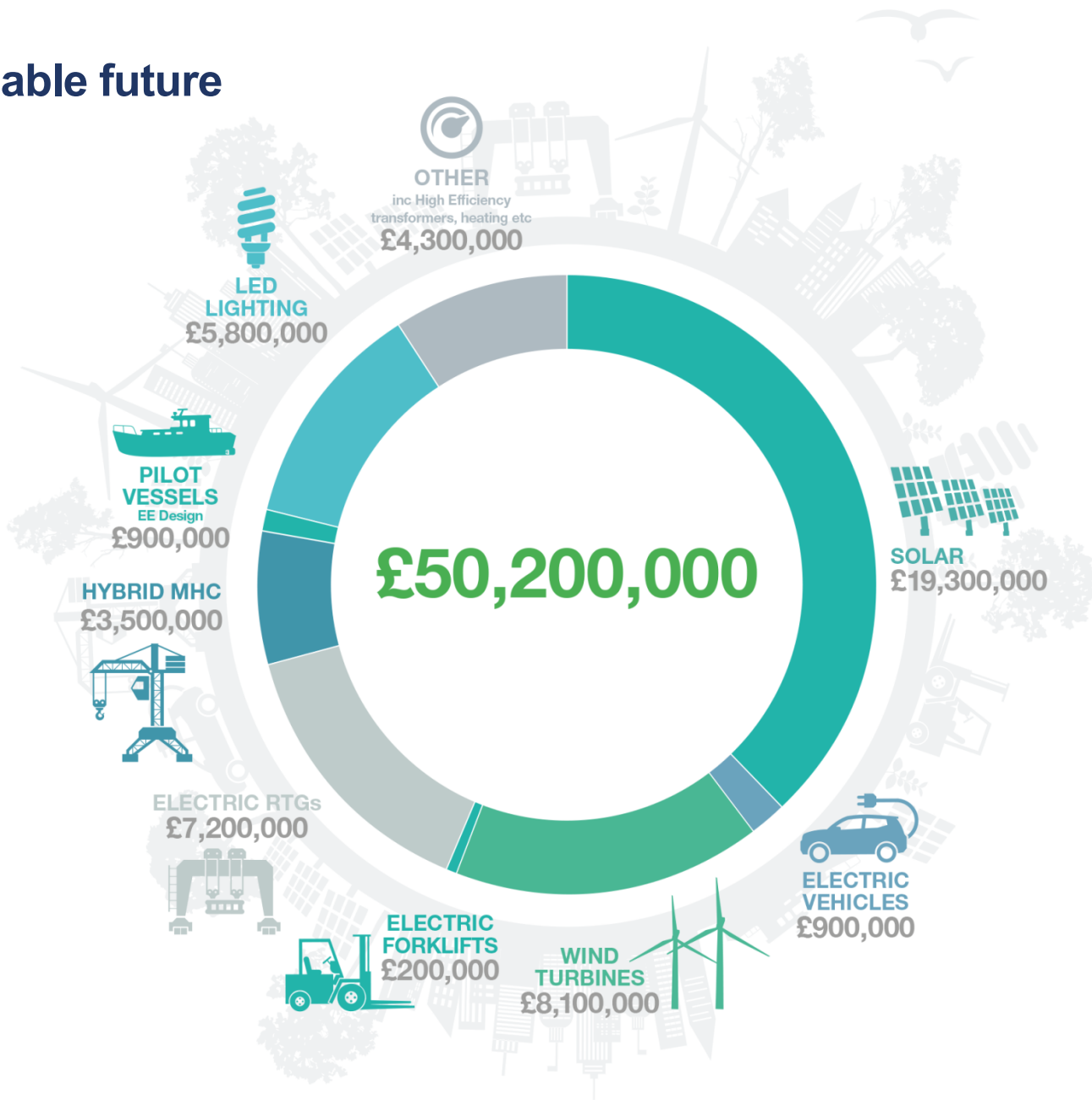
Long term – high level actions – you will be surprised how much you have achieved when you look back 5-10 years

ABP scope 1 & 2 emissions

ABP energy use only.



Investing in a sustainable future





ABP's focus is not only on green energy but also on improving waste management year on year. **ABP is currently achieving its objective of diverting over 90% of all waste to landfill.**

In addition, ABP colleagues across the regions have been very active in organising events such as beach cleans, litter and plastic collections and more.



Generating renewable energy

22.2GWh

IN 2019, ABP GENERATED 22.2GWH OF ELECTRICITY,
17% MORE THAN THE PREVIOUS YEAR

12.6GWh

IN 2019, 12.6GWH (18.8%) OF ALL THE ELECTRICITY ABP USED WAS
GENERATED BY ONSITE RENEWABLES

17

OF ABP'S 21 PORTS HAVE RENEWABLE
ENERGY GENERATION PROJECTS,
**PROVIDING CLEAN POWER FOR THE
COMPANY AND ITS CUSTOMERS**

2.4GWh

OF ELECTRICITY GENERATED BY ONSITE RENEWABLES WAS
USED BY CUSTOMERS

7.2GWh

OF ELECTRICITY GENERATED BY ONSITE RENEWABLES WAS
EXPORTED TO THE UK GRID

Externalise positive aspects

We tend to focus on aspects and impacts as negative, shout about what you can do for the wider environment and community.

Don't be afraid to commercialise these, it will significantly increase buy in.



Reducing GHG emissions

Since 2014 **ABP has reduced its absolute GHG emissions by 27%.**

This reduction in emissions not only minimises the environmental impacts of ABP's own operations but also those of other port users. By combining reduced emissions with excellent rail, short sea and coastal shipping connections, ABP continues to improve the resilience and sustainability of wider supply chains.



Since the spring of 2000, ABP has been managing the complete end-to-end operation for Scotland's TimberLINK service. The TimberLINK Service ships up to **100,000 tonnes of timber a year, removing around one million lorry miles from roads** between Argyll and Ayrshire.



In June 2019, Hull University published research showing the major benefits of choosing Hull and Immingham for moving cargo between key logistics hubs in the UK and EU, demonstrating why Humber ports offer a better deal for shippers, drivers and the environment. The study estimates that **moving 10% of cargo from other locations to the Humber could save in the region of 100,000 tonnes of CO₂e every year** when travelling to locations within Central East-West Corridor.

Finally.....

Be open to new ideas and perspectives, keep learning and keep going.

You know if your are on the right path, there will be set backs and mistakes but learn and just keep going!

.... it is better to do the right thing wrong than the wrong thing right. This is very significant because almost every problem confronting our society is a result of the fact that our public policy makers are doing the wrong things and are trying to do them righter. (Ackoff, 2004)