

# IEMA Webinar: Circular Economy in Practice: IEMA Online Resource - Launch of the Extended Resource Ownership model

25.11.2020

**Marc Jourdan** - Policy & Engagement Lead, IEMA;

**Andy Whyte (FIEMA)** - Chair of the IEMA Circular Economy Network steering group), Environment & Sustainability Specialist, Ricoh UK Products Ltd;

**Tim Danson (MIEMA)** – Member at large of the IEMA Circular Economy Network steering group, Associate, Sustainability, WSP.

[iema.net](https://iema.net)



# Upcoming webinars

- 26<sup>th</sup> November -BS 8632 – Natural Capital Accounting for Organisations (BSI session)
- 26<sup>th</sup> November - Environment Bill Series: Office for Environmental Protection...a new 'green watchdog'
- 4<sup>th</sup> December - The Value of Collaboration for Corporate Sustainability Leadership
- 28<sup>th</sup> January - Circular economy in practice: How to Integrate CE Principles into Highways Maintenance & road infrastructure projects



# Overview

- Online resource created by CE Network to provide a step-by-step approach, along with examples, to increase circularity of materials.
- Provides individuals with explanations at each stage of the manufacturing process, enabling practitioners and academics to share the circular economy with non-specialists.
- This first edition focuses on the manufacturing sector with further editions planned for release in 2021 (construction, water industry and agriculture).

[iema.net](https://iema.net)



# Call for input

- The initial manufacturing-based model will act as a beta version for other sectors, before we transition to a web-based platform.
- As we look to expand the resource in 2021 this is an opportunity to get wider feedback and examples of its use from delegates and IEMA members.
- If you wish to input then please email [m.jourdan@iema.net](mailto:m.jourdan@iema.net)

iema.net

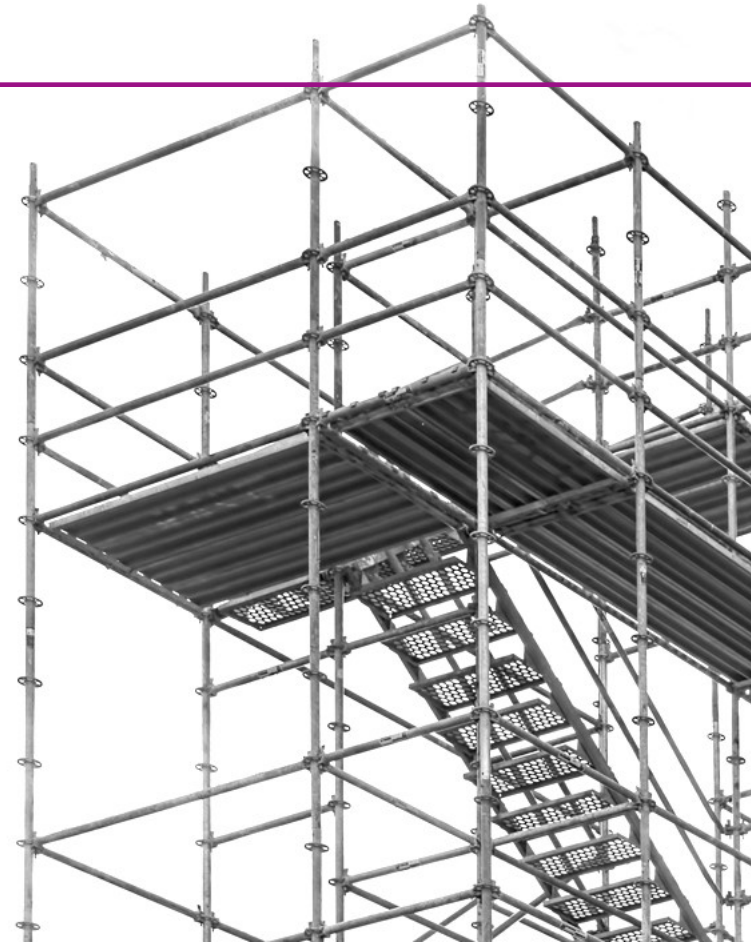


# Session focus

Attendees will gain:

- An understanding of how the decision matrix operates as tested against the manufacturing sector;
- An overview of the key process stages of the ERO model from sustainable design through to resource selection and recycling;
- Practical recommendation from industry experts on the circular economy from Ricoh Products UK Ltd and WSP.

[iema.net](http://iema.net)



# Webinar slides and recording

This webinar is being recorded. The recording and presentations will be made available for IEMA members on [iema.net](https://iema.net) within 48 hours of the webinar.

[iema.net](https://iema.net)



## Q&A

Send in your questions as we go through the session – we'll have plenty of time after the presentations to address these.

[iema.net](http://iema.net)



# Want to join the debate?

If you have expertise, or keen interest, in sustainable resource management and wish to engage with IEMA on how we can work together to make the transition to a circular economy a reality, then join our Circular Economy network:

<https://www.iema.net/policy/ce/ce-engagement>

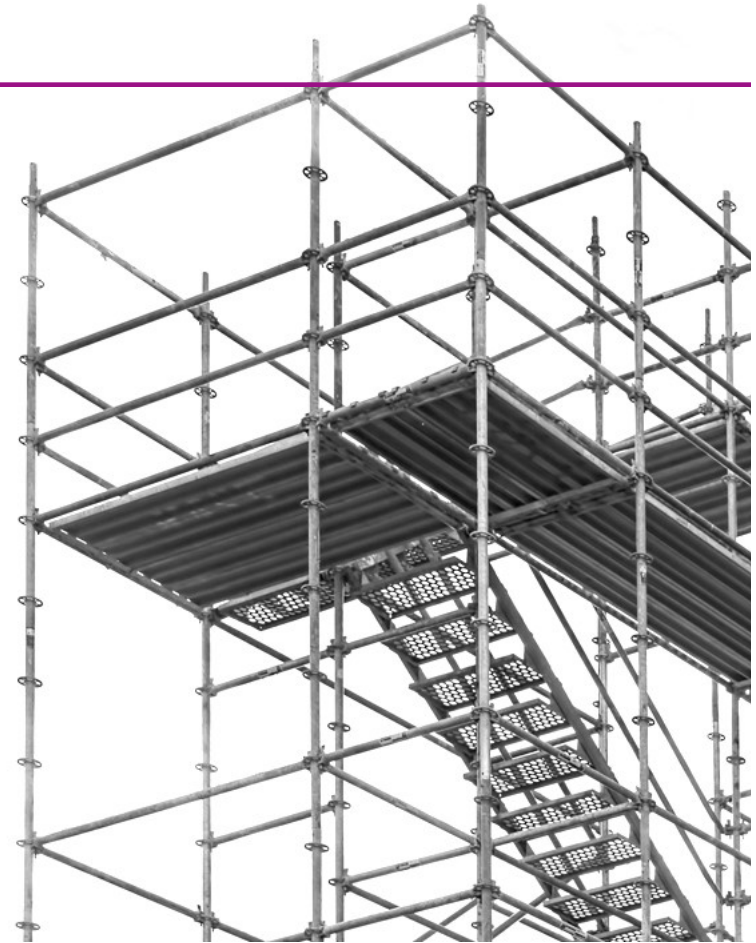
iema.net



# Questions

Marc Jourdan  
IEMA Policy & Engagement Lead  
[m.jourdan@iema.net](mailto:m.jourdan@iema.net)

iema.net



# Speakers



**Marc Jourdan**  
Policy and  
Engagement Lead

**IEMA**



**Andy Whyte**  
Environment & Sustainability  
Specialist

**Ricoh UK Products Ltd**



**Tim Danson**  
Associate, Sustainability

**WSP**

[iema.net](http://iema.net)



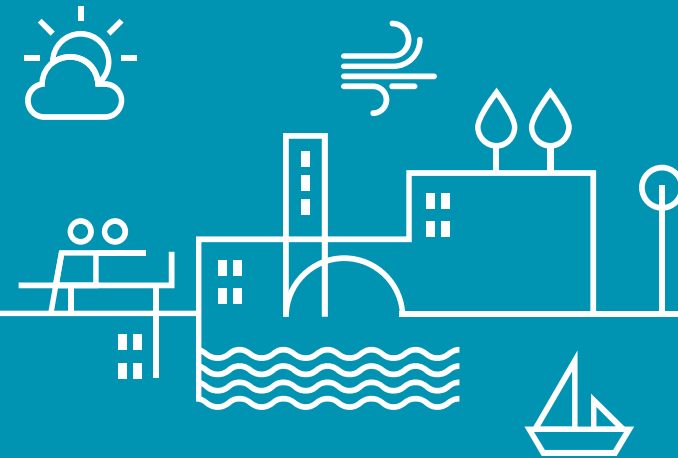
# Poll Question 1



# Presentations



## Poll Question 2



# Questions & Answers

# Speakers



**Marc Jourdan**  
Policy and  
Engagement Lead

**IEMA**



**Andy Whyte**  
Environment & Sustainability  
Specialist

**Ricoh UK Products Ltd**



**Tim Danson**  
Associate, Sustainability

**WSP**

[iema.net](http://iema.net)

# Thanks for joining us

You will be able to access today's slides and recordings on [iema.net](https://iema.net). Simply log in and click on 'Watch again' on the 'Resources' tab.

[iema.net](https://iema.net)

